

**PLAKA - ISODRAIN**

Studded drainage membrane

REF 05.07.01 - Version V01 - 13/08/2020



**Description**

ISODRAIN is a drainage system made of high density PE sheet which consists of a succession of studs.

**Application fields**

Stud height of 7 mm.

Placed against underground walls with the studs facing the wall.

ISODRAIN fulfills 3 functions :

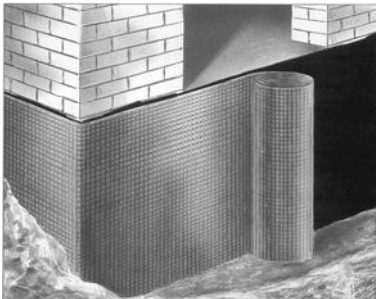
- Drainage of the groundwater
- Ventilation of the walls
- Protection of the waterproof layer

Stud height of 20 mm.

Placed on the binding concrete as drainage.

**Installation instructions**

Stud height of 7 mm



- Place the ISODRAIN with the studs facing the masonry, with an overlap of  $\pm 20$  cm. This overlap can easily be realized because the studs fit perfectly together.
- Fix the studded membrane to the wall with nails put through a stud ring. This stud ring ensures the watertightness of the ISODRAIN at the fixing place.



No norm specifies the necessary quantity of nails that need to be used.

The minimal quantity that we advise is 6 nails per m<sup>2</sup>.

This quantity will have to be adapted in function of the application.

Note that nails have to be added at the level of the overlapping between two draining sheets.



- Fix the protection profile at the top of the ISODRAIN, so the free space is being closed.

©Copyright protected

This sheet, written with great care, supersedes all previous versions. The technical information on the design, models, illustrations, design values and specifications are believed to be accurate. We make no warranties (expressed or implied) as to its accuracy and assumes no liability in connection with non suitable use of this product. We reserve the right to modify the contents of this form without prior notice.

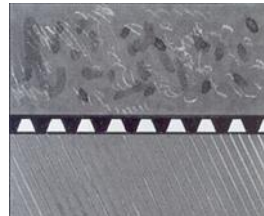
**PLAKA - ISODRAIN**

Studded drainage membrane

REF 05.07.01 - Version V01 - 13/08/2020



Stud height of 20 mm



Concrete slab

ISODRAIN

Binding concrete

**Properties**

ISODRAIN withstands chemicals and protects the underground wall against root growth. The characteristics of ISODRAIN do not change over time and its composition does not pollute the groundwater.

Mechanical properties		
Material :	HD-PE	
Stud height of 7 mm	Sheet thickness	± 0,5 mm
	Pressure resistance	± 400 kN/m <sup>2</sup>
	Temperature resistance	from -30 °C till +80 °C
	Number of studs	± 1930/ m <sup>2</sup>
	Air volume between the studs	± 5.02 l/ m <sup>2</sup>
Stud height of 20 mm	Sheet thickness	± 0.9 mm
	Pressure resistance	± 200 kN/m <sup>2</sup>
	Number of studs	± 400/ m <sup>2</sup>
	Air volume between the studs	± 14 l/ m <sup>2</sup>
	Temperature resistance	from -40 °C till +80 °C
	Drainage capacity	36 000 l/h/m

**Dimensions**

Material dimensions						
Reference code	Picture	Stud height (mm)	H (cm)	L (m)	m <sup>2</sup> / box	Kg / m <sup>2</sup>
RS6837		7	100	20	20	0,60
RS6838		7	150	20	30	0,60
RS6839		7	200	20	40	0,60
RS6840		7	250	20	50	0,60
RS6843		7	300	20	60	0,60
RS6836		20	200	20	40	1,00

Packaging on roll.

©Copyright protected

This sheet, written with great care, supersedes all previous versions. The technical information on the design, models, illustrations, design values and specifications are believed to be accurate. We make no warranties (expressed or implied) as to its accuracy and assumes no liability in connection with non suitable use of this product. We reserve the right to modify the contents of this form without prior notice.

**PLAKA - ISODRAIN**

Studded drainage membrane

REF 05.07.01 - Version V01 - 13/08/2020



**Accessories**

Stud ring



This stud ring improves the impermeability of the ISODRAIN at the fixing place.

Protection profile



The protection profile closes the gap between the wall and the studded membrane.

Dimensions	
Material :	PVC
Length :	2000 mm
Cross-section :	<p style="text-align: center;">Dimensions in mm</p>